

歐特加科技

Autoplustek Automation

ATPGR / ATPSLR / ATPMAR / ATPGripper / ATPFD

AUTO+

自動化最佳選擇



ATPGR Series

+ 歐特加科技的產品 — 讓您的工廠具備最佳競爭力

Autoplustek product — Let your factory be more competitive.

高速	High Speed
省佔地	Less Space Occupied
操作方便	Easy Operation
模組化設計	Modulized Design
彈性連結應用	Flexible Linkage Application
豐富應用技術	Excellent Know-how Experience
客製化服務	Customized Service



+ 機械規格 Machine Specification

項目	Item	單位(Unit)	ATPGR-03	ATPGR-05	ATPGR-10	ATPGR-15	ATPGR-25	
行程	Cross travel	X	mm	3000	3000	3600	3600	3600
		Y	mm	750	750	850	850	850
快速進給	Rapid feed	X	m/min	120	120	120	90	90
		Y	m/min	120	120	120	60	60
荷重能力	Load capacity	Kg/pc	3	5	10	15	25	
換料時間	Exchange time	Second	10	10	12	15	15	
電力需求	Power consumer (3Ø,220V)		2kva	3kva	4kva	6kva	8kva	
氣壓需求	Pneumatic consumer		5.5kg/cm ² , 60L/min					

+ 以上為標準規格可依客戶需求變更設計(Above specification can be changed depended on customer requirement)

Side L/Unloading Robot 側外型機械手系列

ATPSLR Series

(中華民國專利號碼：M384726)

快速換料的最佳選擇

The best choice of Quick L/Unloading system

- +** 盤型、棒材工件快速上下料
上下料時間為4.5秒以內
(若加上吹氣及車床夾爪開閉時間約7秒)

Quick L/Unloading for Disc & Short bar
Cycle Time is under 4.5 sec.
(Including air blow & chuck open/close of lathe is about 7 sec.)
- +** 用於無尾座車床(或有尾座)
(可依車床型式規劃可行性)

Suitable for lathe without tailstock or (with tailstock)
- +** 可搭配各式模組化供料機，
達成客製化的多樣選擇

Collocate with several kinds of customized & modulized work-feeders

標準附件

- 夾爪吹氣
- 工件檢測
- 推料機構

Standard Accessories

- Robot air blower
- Work-piece detection
- Pusher

特殊附件

- 夾爪行程檢出
- 機外吹氣
- 翻轉站
- 定位站

Optional Accessories

- Chuck stroke confirmation
- External air blower
- Turn over station
- Positioning station

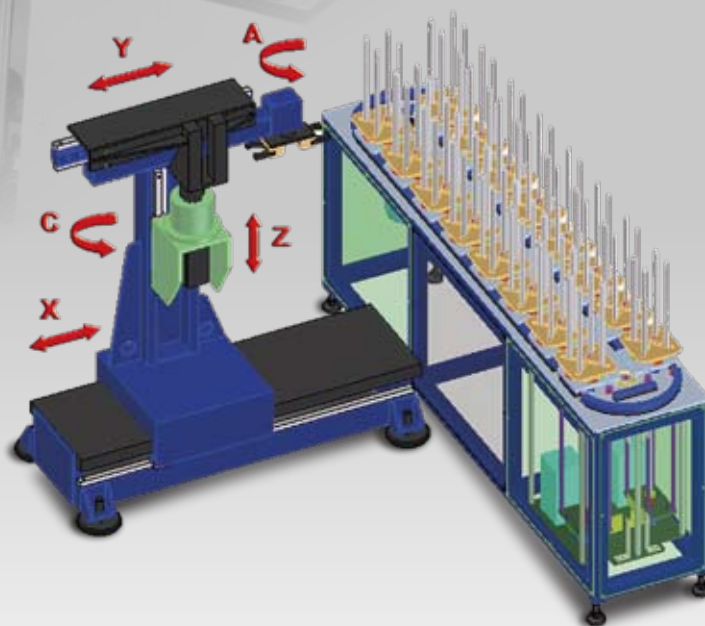
機械規格 Machine Specification

項目	Item	單位(Unit)	ATPSLR-03	ATPSLR-05	
行程	Cross travel	X	mm	800	1200
		Y	mm	250	250
		C	°	0~350	0~359
快速進給	Rapid feed	X	m/min	60	60
		Y	m/min	15	15
		C	°/min	75	75
荷重能力	Load capacity	Kg /pc	3	5	
換料時間	Exchange time	Second	7	7	
電力需求	Power consumer (3Ø,220V)		1.8kva	2.5kva	
氣壓需求	Pneumatic consumer		5.5kg/cm ² , 60L/min		

+ 以上為標準規格可依客戶需求變更設計(Above specification can be changed depended on customer requirement)



ATPMAR Series

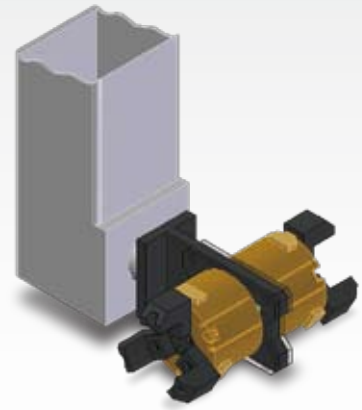
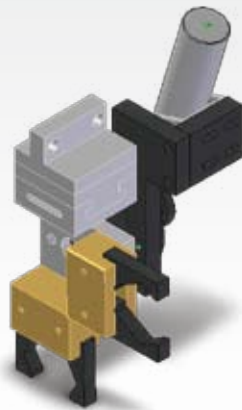
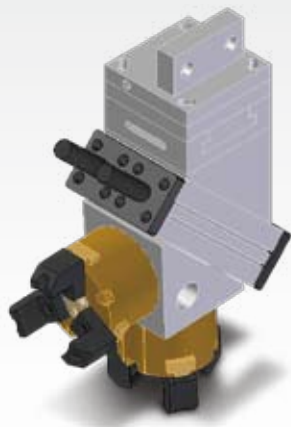


- ✦ 用於車床、綜合加工機、攻牙鑽孔加工機、拉床...
Suitable for Lathe、Machine center、Tapping center、
Broaching Machine...

✦ 機械規格 Machine Specification

項目	Item	單位(Unit)	ATPMAR-05	
行程	Cross travel	X	mm	1000
		Y	mm	800
		Z	mm	250
		A	Deg.	350
		C	Deg.	350
快速進給	Rapid feed	X	m/min	30
		Y	m/min	120
		Z	m/min	15
		A	rpm	75
		C	rpm	20
荷重能力	Load capacity	Kg /pc	5	
換料時間	Exchange time	Second	10	

ATPGripper Series



+ ATPGA Series

- 換爪時旋轉180°
- 適用於圓盤類工件
- Gripper rotates 180°.
- For disc.

+ ATPGB Series

- 換爪時擺動90°
- 適用於棒材類工件
- Gripper swings 90°.
- For bar.

+ ATPGS Series

- 換爪時旋轉0°~359° (伺服)
- 適用於圓盤類或短棒材類工件
- Gripper rotates 0°~359° (Servo)
- For disc or short bar.

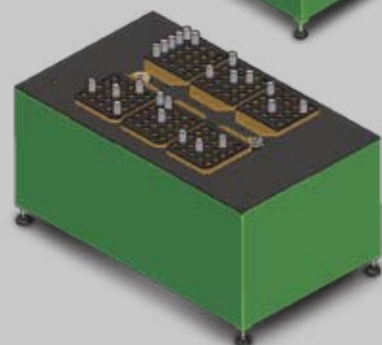
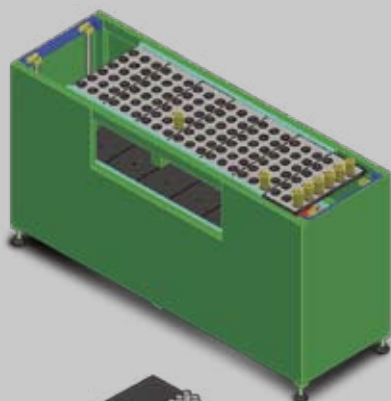
+ 夾爪規格 ATP Gripper Specification

項目	Item	ATPGA/GS-03	ATPGA/GS-05	ATPGA/GS -10	ATPGA/GS -15
夾爪型式	Gripper Type	3-Jaw	3-Jaw	3-Jaw	3-Jaw
夾持能力	Load Capacity	3kg	5kg	10kg	15kg
夾爪行程	Stroke	6mm	8mm	10mm	12mm

項目	Item	ATPGB-03	ATPGB-05	ATPGB-10	ATPGB-15
夾爪型式	Gripper Type	Parallel Jaw	Parallel Jaw	Parallel Jaw	Parallel Jaw
夾持能力	Load Capacity	3kg	5kg	10kg	15kg
夾爪行程	Stroke	8mm	10mm	12mm	On demand

+ 以上為標準規格可依客戶需求變更設計 (Above specification can be changed depended on customer requirement)

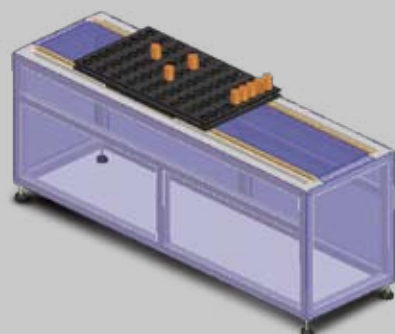
ATPFD Series



+ ATPFD-0A 托盤循環式供料機 Pallet Cyclic type

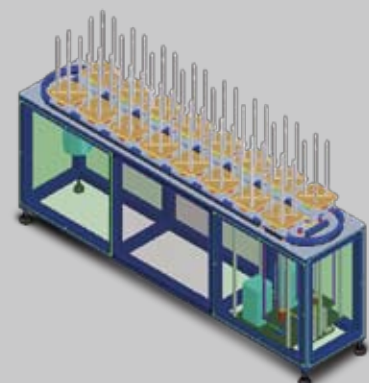
型號 Model	托盤尺寸 Pallet Size	每盤荷重 Load Capacity/ Pallet	佔地面積 Space Occupied
ATPFD-0A-V220-13P	220X474mm	30Kg/pallet	1900×600×1000

型號 Model	托盤尺寸 Pallet Size	每盤荷重 Load Capacity/ Pallet	佔地面積 Space Occupied
ATPFD-0A-H2835	280X350mm	30Kg/Pallet	1520×910×800



+ ATPFD-0B 平板式供料機 Plate Type

型號 Model	托盤尺寸 Pallet Size	每盤荷重 Load Capacity/ Pallet	佔地面積 Space Occupied
ATPFD-0B-6090	600X900mm	120Kg/Pallet	1900×700×800



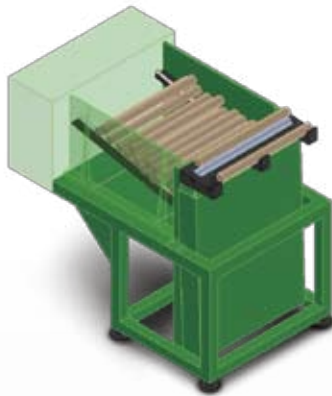
+ ATPFD-0C 圓盤堆疊式供料機 Stacking Type

型號 Model	工件直徑 Work-piece Dia.	每盤荷重 Load /Pallet	佔地面積 Space Occupied
ATPFD-0C-100- (10~16P)	Ø20~Ø100	40Kg/pallet	2000×450×1150
ATPFD-0C-150- (10~16P)	Ø20~Ø150	45Kg/pallet	2000×450×1150
ATPFD-0C-200- (10~16P)	Ø30~Ø200	80Kg/pallet	2700×500×1250
ATPFD-0C-250- (10~16P)	Ø45~Ø250	125Kg/pallet	3200×650×1250
ATPFD-0C-300- (10~16P)	Ø60~Ø300	125Kg/pallet	3600×700×1300
標準堆疊高度 Stacking Height	350mm	特殊固定式托盤 Customer made pallet	



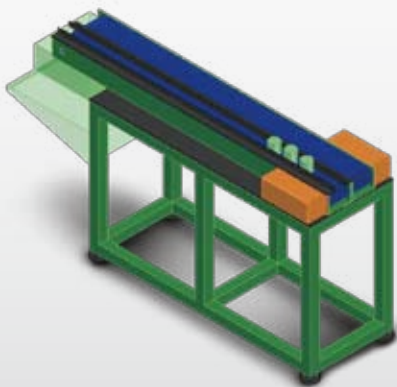
+ ATPFD-0D 鍊條式供料機 Chain Type

型號 Model	工件直徑 Work-piece Dia.
ATPFD-0D-3040	30mm
儲存量 Storage Q'ty	佔地面積 Space Occupied
40(支)	On demand



+ ATPFD-0E 棒材式供料機 Bar Type Type

型號 Model	工件尺寸 Work-piece Size
ATPFD-0E-400	Ø10~40mm,L70~400mm
儲存槽荷重 Load Capacity	佔地面積 Space Occupied
500kg	650×1000×1000



+ ATPFD-0F 皮帶式供料機 Belt Conveyor Type

型號 Model	工件尺寸 Belt Size
ATPFD-0F-100-1000	100×1000mm
儲存量 Storage Q'ty	佔地面積 Space Occupied
On demand	On demand

+ 以上為標準規格可依客戶需求變更設計 (Above specification can be changed depended on customer requirement)

✦ 主要產品

1. 機械手臂
2. 供料機及週邊
3. 機械手夾爪組
4. 工具機自動化整合
5. 關節型機械手應用
6. 夾治具專用機
7. CNC及PLC設計應用
8. 自動化系統安裝、測試及交機服務

✦ MAIN PRODUCTS

1. L/UL robot solutions
2. Workfeeder & auxiliary stations
3. Gripper solutions
4. Machine tool automation
5. Articulated robot application
6. Jig & special machines
7. CNC & PLC design & application
8. System installation & afterservice

AUTO+ 自動化最佳選擇

歐特加科技股份有限公司

Autoplustek Automation Co., Ltd.

434 台中縣龍井鄉中龍路二段2-1號

No.2-1, Sec.2, Chung Long Rd. Lung Jing Hsiang,
Taichung Hsien, Taiwan, R.O.C.

TEL: 04-2652-9558 FAX: 04-2652-9557

E-mail: liaoyc@ms2.hinet.net